

RED T™ Series

RED T240

RED T320

RED T680

RED T1010

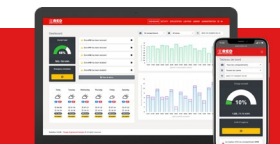
The perfect light for your crops
in all conditions

- Intelligent and scalable top-light to accompany you in your growth
- 4 controllable colors to control your crop
- High efficiency and long life



COMPATIBLE WITH MyRED™

Automate your light strategies



RED T Series

HPS EQUIVALENCE

		HPS 400	HPS 600	HPS 1000
-50% Consumption	= PPF	T240	T320	T680
= Consumption	x2 PPF	T320	T680	T1010

OPTICS



115°

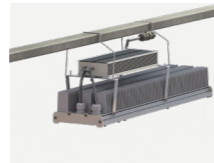
Standard beam



140°

Wide beam

TYPES OF INSTALLATIONS



Profile mounting



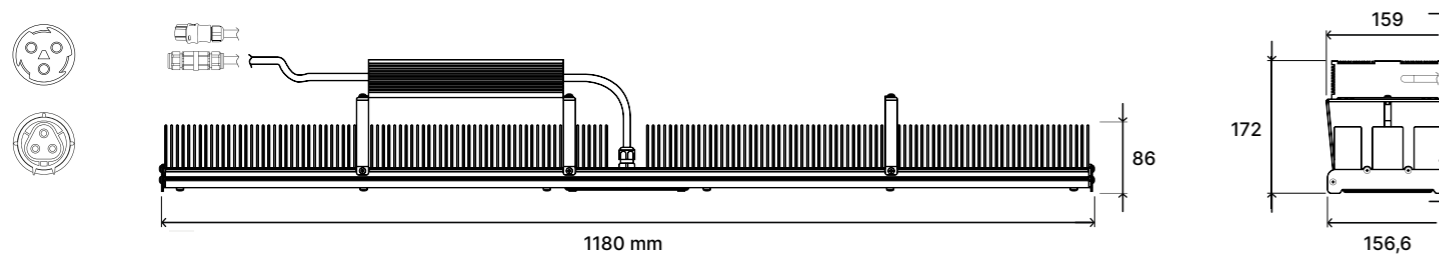
Profile offset



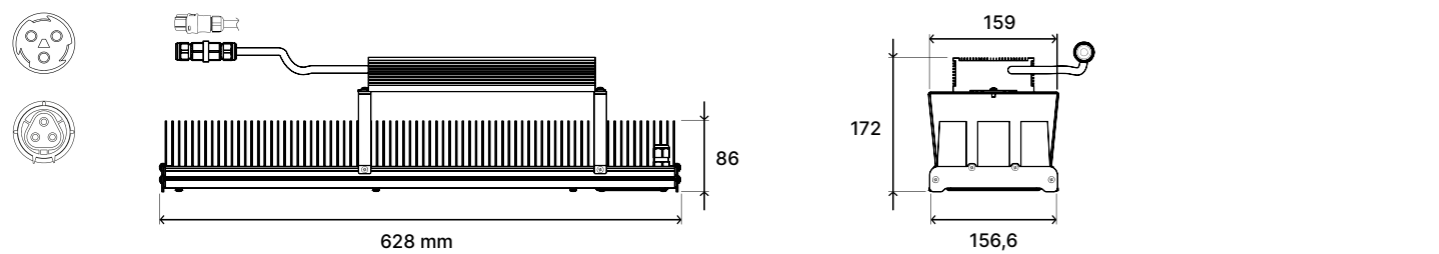
Wire suspension

MECHANICALS SCHEMATICS

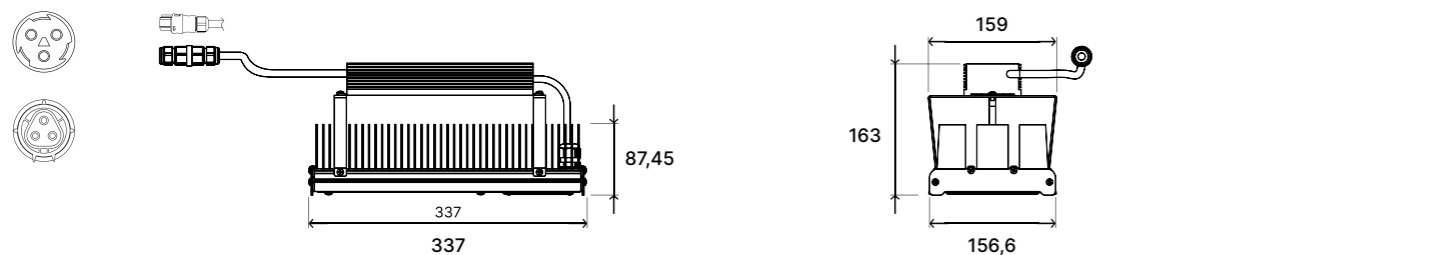
RED T1010



RED T680



RED T240 & RED T320



TECHNICAL SPECIFICATIONS

RED T240

RED T320

RED T680

RED T1010



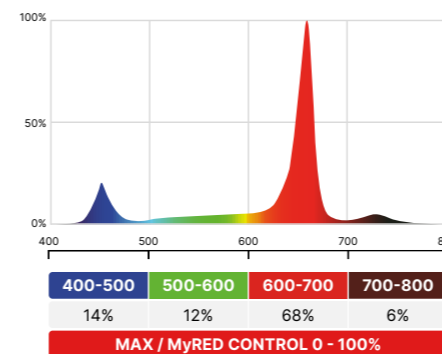
	PPF (400-800) ¹	847 $\mu\text{mol}\cdot\text{s}^{-1}$	1124 $\mu\text{mol}\cdot\text{s}^{-1}$	2387 $\mu\text{mol}\cdot\text{s}^{-1}$	3542 $\mu\text{mol}\cdot\text{s}^{-1}$
	Efficiency ¹	3,5 $\mu\text{mol}\cdot\text{J}^{-1}$	3,5 $\mu\text{mol}\cdot\text{J}^{-1}$	3,5 $\mu\text{mol}\cdot\text{J}^{-1}$	3,5 $\mu\text{mol}\cdot\text{J}^{-1}$
	PPF (400-800) ¹	714 $\mu\text{mol}\cdot\text{s}^{-1}$	947 $\mu\text{mol}\cdot\text{s}^{-1}$	2012 $\mu\text{mol}\cdot\text{s}^{-1}$	2985 $\mu\text{mol}\cdot\text{s}^{-1}$
	Efficiency ¹	2,95 $\mu\text{mol}\cdot\text{J}^{-1}$	2,95 $\mu\text{mol}\cdot\text{J}^{-1}$	2,95 $\mu\text{mol}\cdot\text{J}^{-1}$	2,95 $\mu\text{mol}\cdot\text{J}^{-1}$
Power ²	242 W	321 W	682 W	1012 W	
Voltage ²	277-480 VAC	277-480 VAC	277-480 VAC	277-480 VAC	
Courant à 400 VAC	0,6	0,8	1,7	2,6	
THD	< 11%	< 11%	< 11%	< 11%	
Power factor	> 95%	> 95%	> 95%	> 95%	
Size	337 L x 159 W x 163 H mm	337 L x 159 W x 163 H mm	628 L x 159 W x 172 H mm	1180L x 159W x 172H mm	
Weight lighting	4,7 kg	4,7 kg	9 kg	14 kg	
Max. ambient temperature	+40°	+40°	+40°	+40°	
Lifespan ³	Q90@ 50 000h / 25°	Q90@ 50 000h / 25°	Q90@ 50 000h / 25°	Q90@ 50 000h / 25°	
Certification	CE, RoHS, CSA	CE, RoHS, CSA	CE, RoHS, CSA	CE, RoHS, CSA	
IP	66	66	66	66	

¹Maximum achievable guideline values.

²±5%

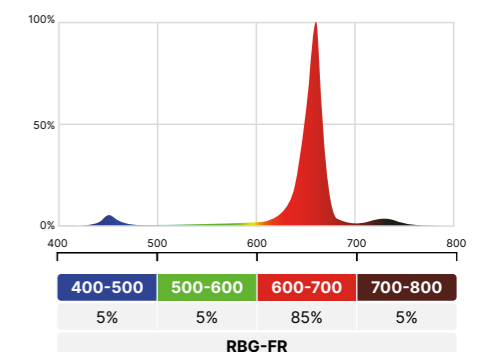
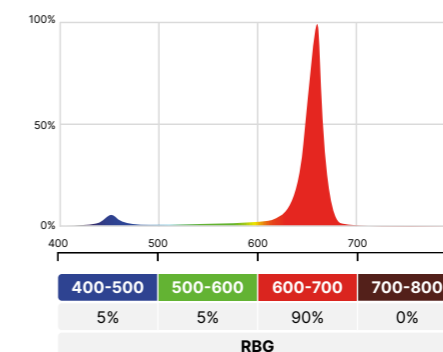
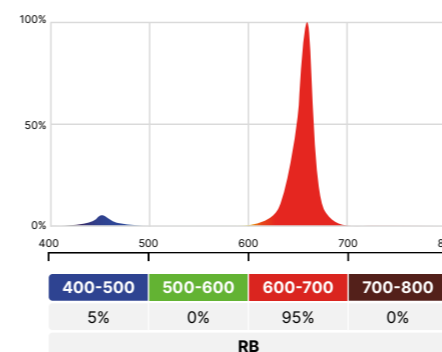
³Lifetime and maintenance values are given at an ambient temperature of 25 °C / 77 °F.

All measured lifetimes, flux and power consumption are industry standard measurements indicating average performance and lifetime operation and not a performance claim specific to any individual product.



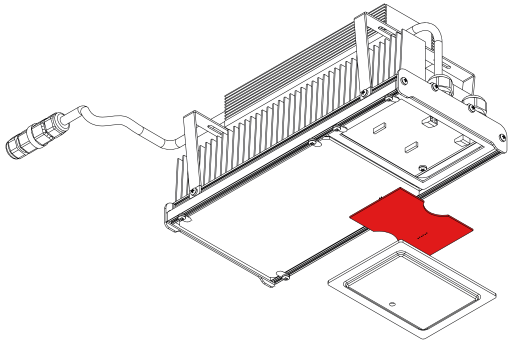
Max PPF	RED T240	RED T320	RED T680	RED T1010
Blue	53	74	141	233
White	133	230	382	531
Red	847	1124	2387	3542
Far red	68	88	164	273

DIM & FIX / FIXED SPECTRUM



Unlock more control... when you feel like it !

Evolve from an On/Off fixed spectrum towards dimming or even towards total spectrum control and automation !



RED Control Card in 4 points :

- Quick and easy conversion
- No modification of the electrical installation required
- Install the card by yourself or by an installer
- Switch to MAX to unlock the entire RED solution

	FIX	DIM	MAX
Photoperiod management	✓	✓	✓
Dimming Controls	✗	✓	✓
Autonomous intensity management	✗	✓	✓
Far red control	✗	✗	✓
Autonomous spectrum management	✗	✗	✓



RED brings us energy savings, agronomic quality, a more precise production time and a cultivation itinerary more adapted to our production.

Nicolas PAUL
CEO - Groupe Thomas Plants

 **RED**
HORTICULTURE
IT'S PHOTOBIO-LOGIC

More information about RED solution:
www.horticulture.red

E-mail: contact@horticulture.red
Tel: +33 (0)4 27 82 37 94

Follow us:
  

© Copyright 2022 Rouge Engineered Designs. All rights reserved.
RED reserves the right to change the data without notice.
Last update : 05/22